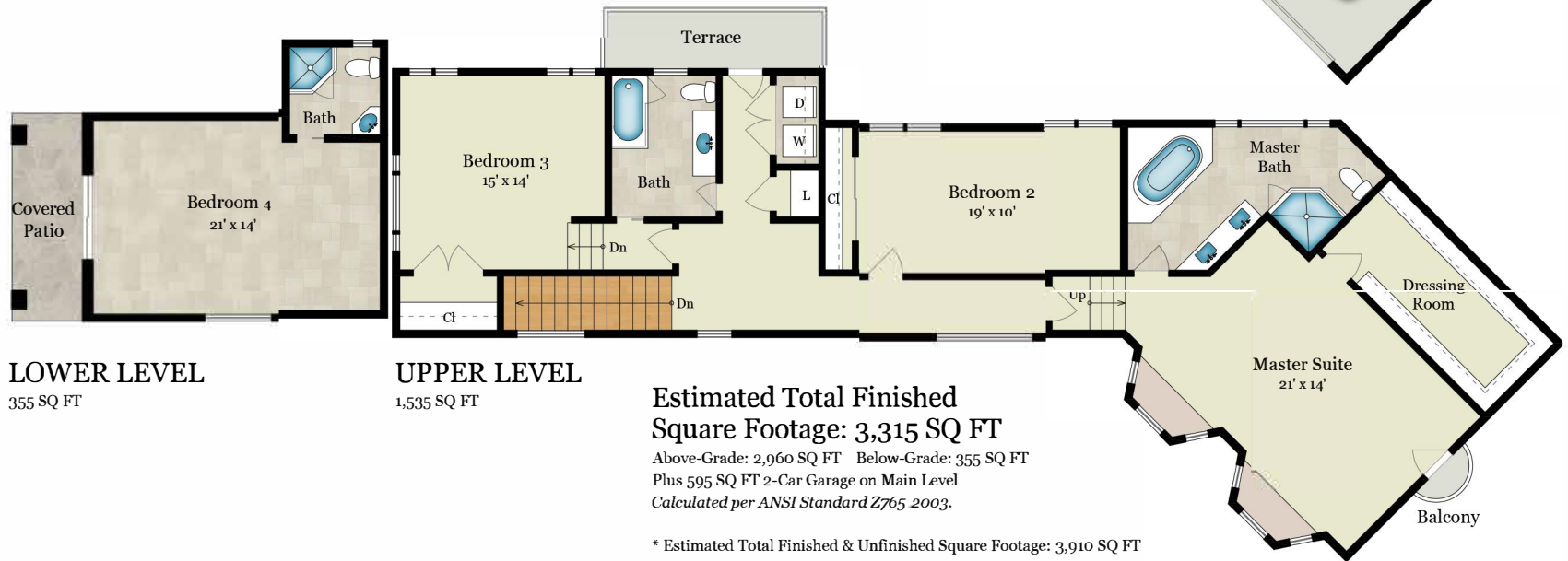


75 OAK VIEW DRIVE

SAN RAFAEL, CA 94903



MAIN LEVEL
1,425 SQ FT



LOWER LEVEL
355 SQ FT

UPPER LEVEL
1,535 SQ FT

**Estimated Total Finished
Square Footage: 3,315 SQ FT**

Above-Grade: 2,960 SQ FT Below-Grade: 355 SQ FT
Plus 595 SQ FT 2-Car Garage on Main Level
Calculated per ANSI Standard Z765 2003.

* Estimated Total Finished & Unfinished Square Footage: 3,910 SQ FT



75 OAK VIEW DRIVE

SAN RAFAEL, CA 94903



N
SITE PLAN

Rendering by Floor Plan Visuals.
All measurements are approximate. While deemed reliable, no information on these floor plans should be relied upon without independent verification.