



EXTRA-SPECIAL UNIT AT VILLA MARIN

100 THORNDALE DRIVE, NO. 246 • San Rafael, CA 94903

VillaMarinLiving.com



Offered At

\$315,000

Living Area

820 sq. ft.

Bedrooms

1

Bathrooms

1

Extra-special unit at Villa Marin, a luxury 60+ continuing care facility. This is a unique opportunity to acquire a property with exclusive use of a ~650 sq. ft. deck. Accessed via the bedroom suite, the expansive outdoor area creates a wonderful natural extension to the living space. Enjoy the panoramic hilltop vistas and the views over the community gardens.

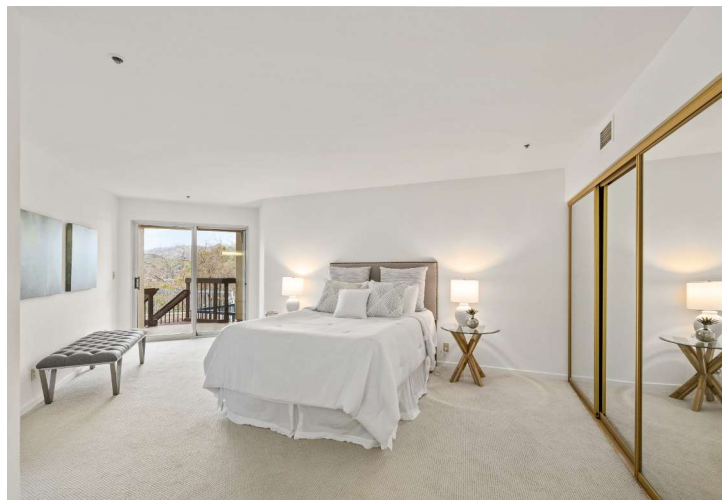
The unit has been freshly painted including the kitchen cabinets, and there is new carpeting throughout. There is generous closet space, and washer/dryer hookups in-unit for maximum convenience. 1-car secure covered parking is included, plus a storage area in the garage.

Monthly HOA fee \$4,397.



RACHEL PERCIVAL
ENGEL & VÖLKERS MILL VALLEY
78 E Blithedale Avenue | Mill Valley | CA 94941
+1 415.933.7681 • DRE# 01904109
rachel@rachelpercival.com
rachelpercival.com

ENGEL & VÖLKERS®



ENGEL & VÖLKERS®