

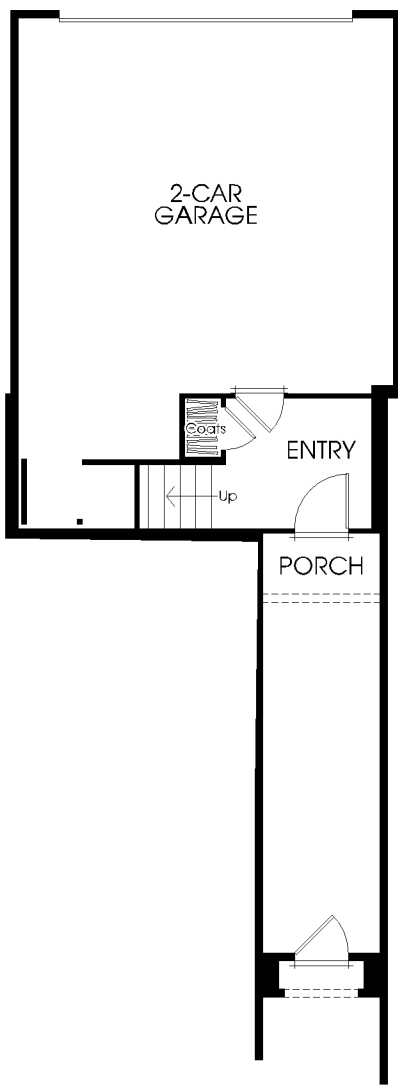
# LAPIS

Portola Springs

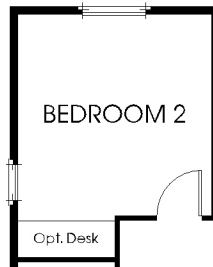
**Tract Information ©1982-2023**  
 Tract Codes Maps and Specific Arwork ©1982-2023 The Inside Tract © - All Rights Reserved. Floor Plans and Maps are artist conceptions and are not intended to be an actual depiction of the buildings, fencing, walks, driveways or landscaping. Various entities such as architects tax assessors and appraisers sometimes use different methods to measure square footage of a home. All square footage are approximate and represent measurements from the outside of the home and are not necessarily reflective of the same interpretation. CRMLS does not permit the use of our sketches in their system and posting the plans on a website is not allowed. Drawings most often may also have other copyrights applied to them.

## PLAN IR

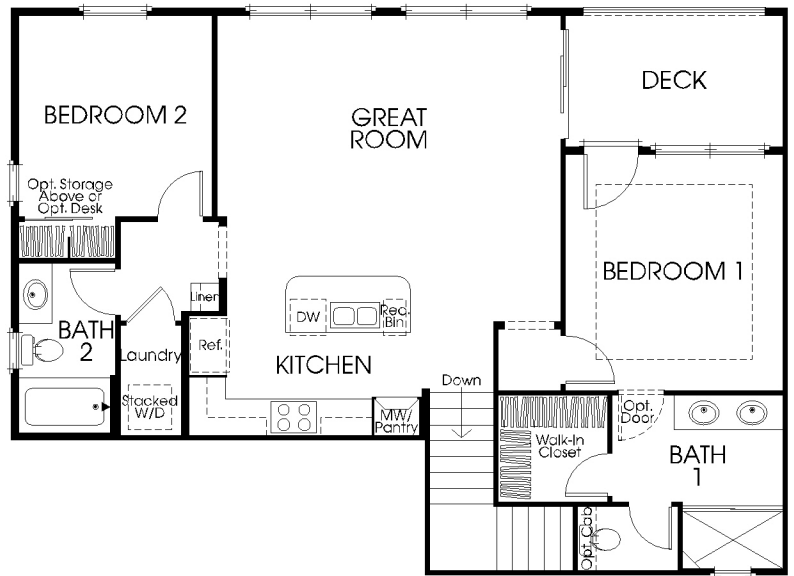
APPROX. 1,172 SQ. FT. • 2 BEDROOMS  
 2 BATHS • 2-CAR ATTACHED GARAGE • DECK



FIRST FLOOR



Optional Desk  
at Bedroom 2



SECOND FLOOR

# LAPIS

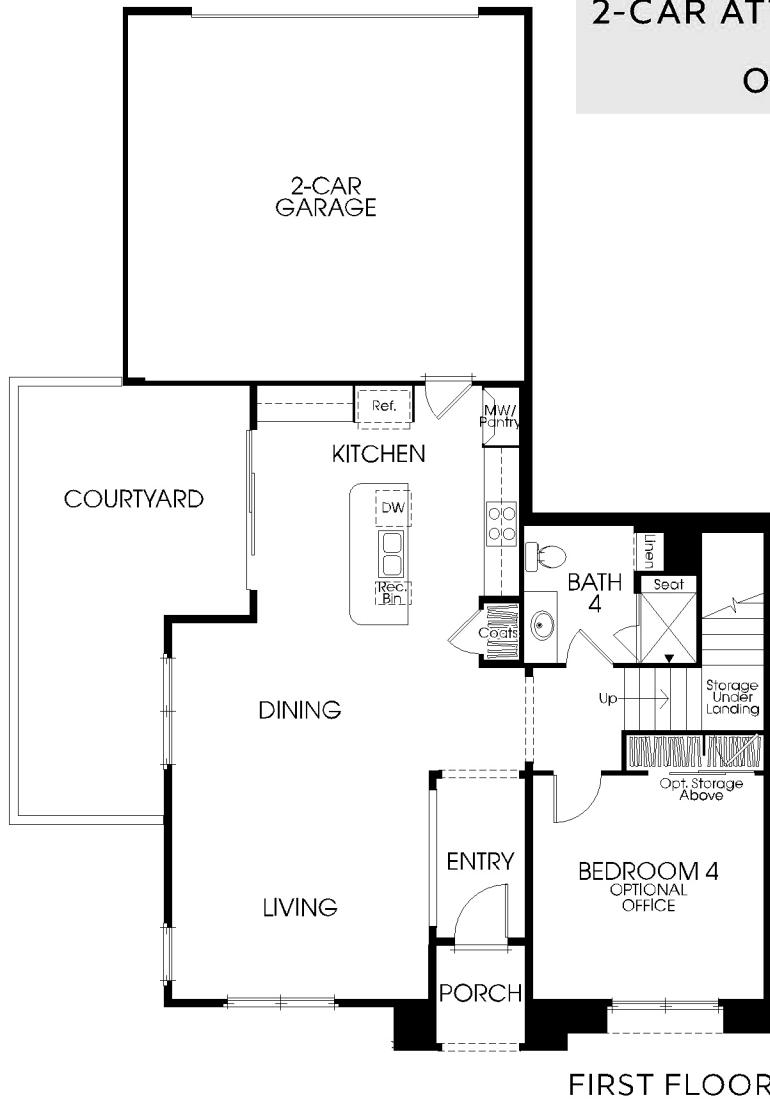
Portola Springs

Tract Information ©1982-2023

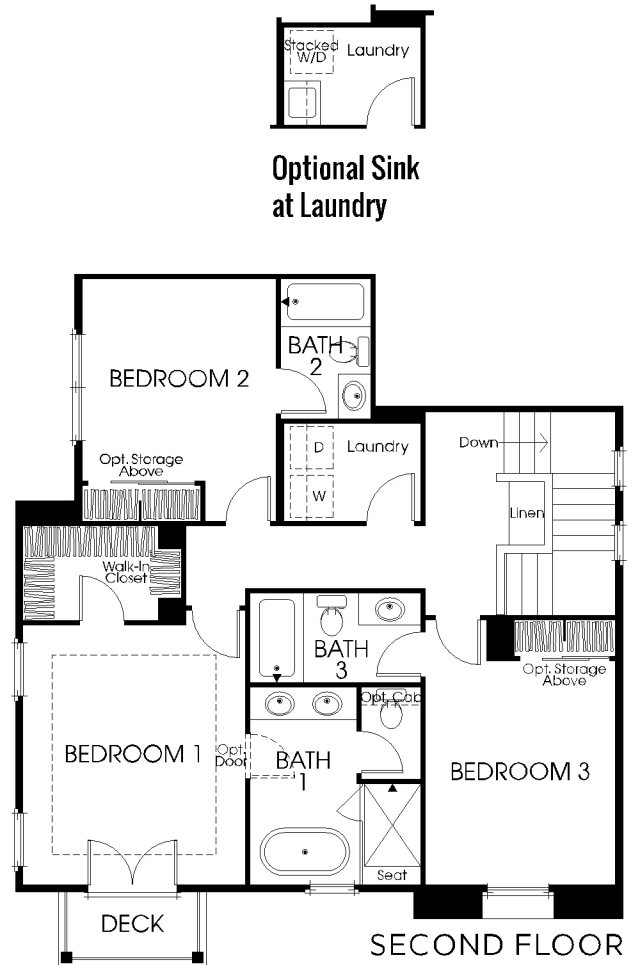
Tract Codes Maps and Specific Artwork ©1982-2023 The Inside Tract® - All Rights Reserved. Floor Plans and Maps are artist conceptions and are not intended to be an actual depiction of the buildings, fencing, walks, driveways or landscaping. Various entities, such as architects, tax assessors and appraisers sometimes use different methods to measure square footage of a home. All square footage are approximate and represent measurements from the outside of the home and are not necessarily reflective of the same interpretation. CRMLS does not permit the use of our sketches in their system and posting the plans on a website is not allowed. Drawings most often may also have other copyrights applied to them.

## PLAN 2R

APPROX. 2,006 SQ. FT. • 4 BEDROOMS • 4 BATHS  
2-CAR ATTACHED GARAGE • COURTYARD • DECK  
OPTIONAL OFFICE AT BEDROOM 4



FIRST FLOOR



SECOND FLOOR



Optional Office at Bedroom 4



Optional Sink at Laundry

The deck is only available on certain homesites/elevation. All window sizes, shapes and configurations vary by elevation and/or location. Decks, courtyard size and configuration vary by building type and location.

# LAPIS

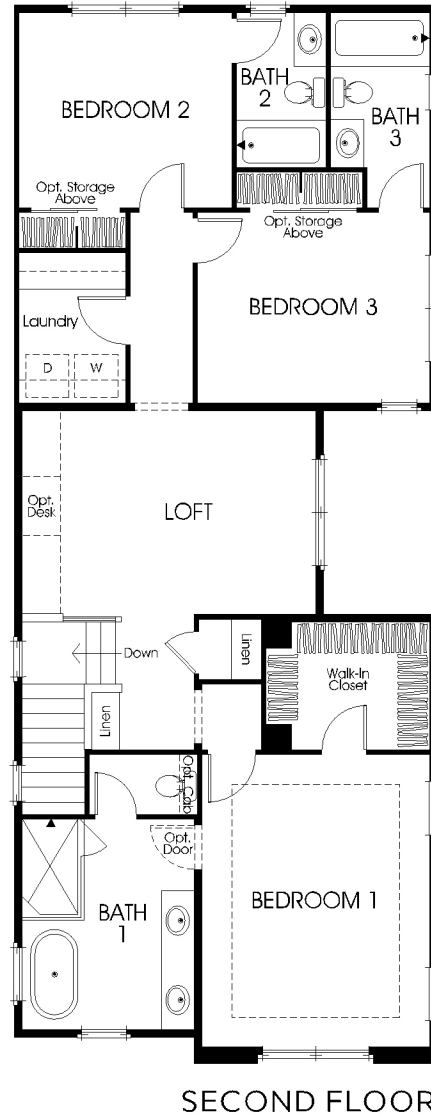
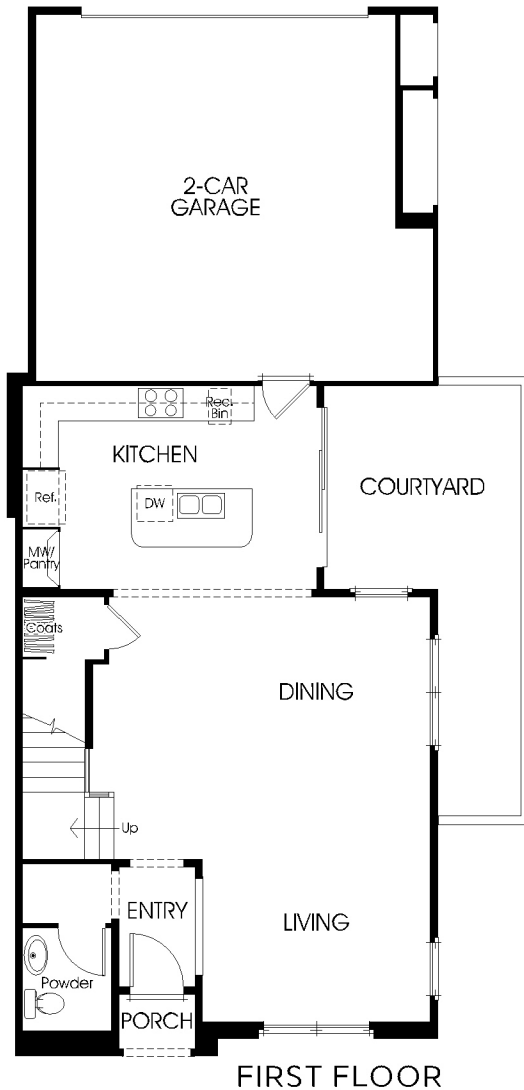
Portola Springs

**Tract Information ©1982-2023**

Tract Codes Maps and Specific Artwork ©1982-2023 The Inside Tract © - All Rights Reserved. Floor Plans and Maps are artist conceptions and are not intended to be an actual depiction of the buildings, fencing, walks, driveways or landscaping. Various entities, such as architects tax assessors and appraisers sometimes use different methods to measure square footage of a home. All square footage are approximate and represent measurements from the outside of the home and are not necessarily reflective of the same interpretation. CRMLS does not permit the use of our sketches in their system and posting the plans on a website is not allowed. Drawings most often may also have other copyrights applied to them.

## PLAN 3R

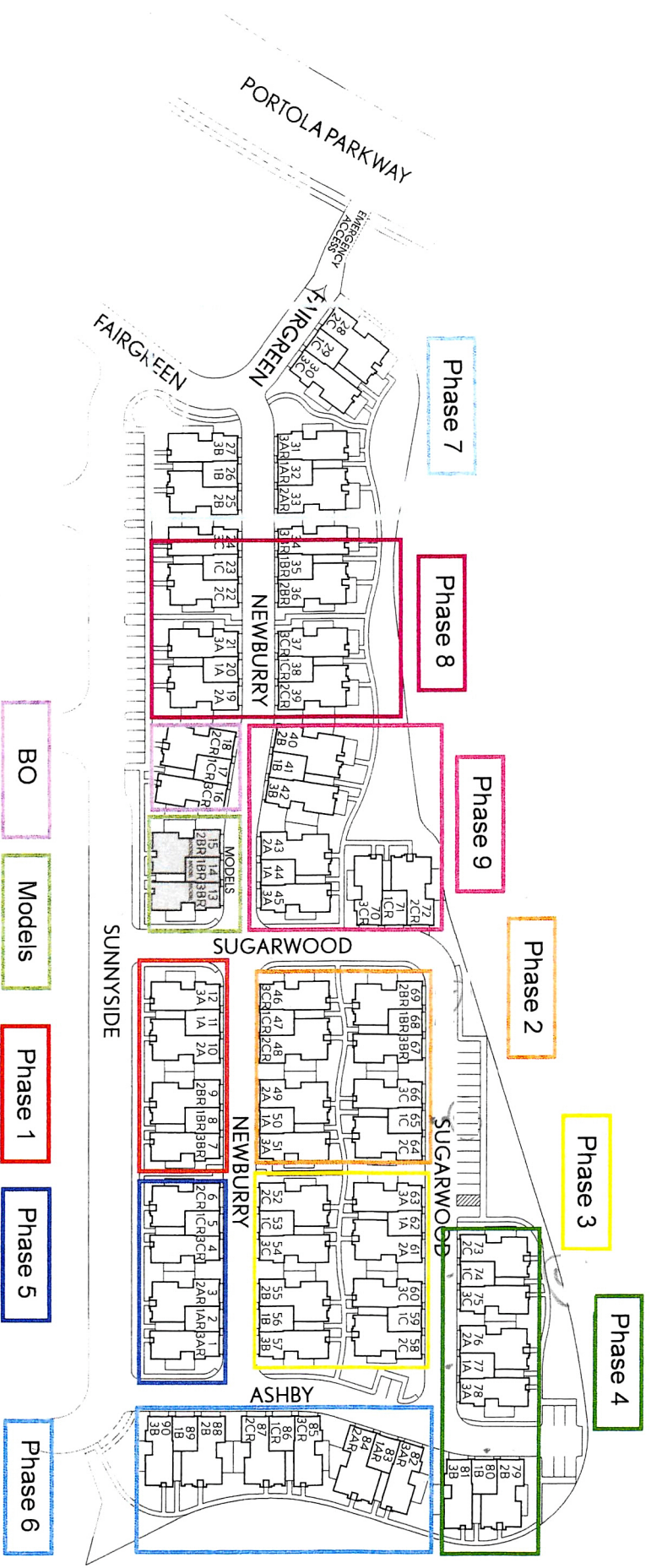
APPROX. 2,083 SQ. FT. • 3 BEDROOMS  
 3.5 BATHS • LOFT • 2-CAR ATTACHED GARAGE  
 COURTYARD



# LAPIS

## Portola Springs

**Tract Information @1982-2023**  
 Tract Codes, Maps and Specific Awnet ©1992-2023. The Inside Tract®. All Rights Reserved. Floor Plans and Maps are artist conceptions and are not intended to be an actual depiction of the buildings, fencing, walks, driveways or landscaping. Various entities, such as architects, tax assessors and appraisers sometimes use different methods to measure square footage of a home. All square footage are approximate and represent measurements from the outside of the home and are not necessarily reflective of the same interpretation. CRMLS does not permit the use of our sketches in their system and posting the plans on a website is not allowed. Drawings most often may also have other copyrights applied to them.



California Pacific Homes has provided this information for reference only. Availability in all price ranges is subject to prior sale. Prices and product availability are subject to change without notice. All renderings, floorplans, amenities, facilities and maps are artist renderings of the improvements proposed for Lapis. Actual development of the homes in Lapis may result in changes to the specifications, materials, designs, improvements, elevations, square footages or any other alterations deemed necessary. Windows, walls, porches, balconies, doors, courtyards, storage and garages vary per home location and elevation. California Pacific Homes reserves the right to make changes and/or modifications at its discretion and without notice. As a resident of Lapis, you automatically become a member of the Lapis Neighborhood Association and Portola Springs Community Association. Monthly association dues maintain the quality of common area facilities. Lapis is included in an Assessment District and Community Facilities (Water Hoos) District.

# LAPIS

Portola Springs

**Tract Information ©1982-2023**  
Tract Codes Maps and Specific Anwork ©1982-2023 The Inside Tract © - All Rights Reserved. Floor Plans and Maps are artist conceptions and are not intended to be an actual depiction of the buildings, fencing, walks, driveways or landscaping. Various entities such as architects tax assessors and appraisers sometimes use different methods to measure square footage of a home. All square footage are approximate and represent measurements from the outside of the home and are not necessarily reflective of the same interpretation. CRMLS does not permit the use of our sketches in their system and posting the plans on a website is not allowed. Drawings most often may also have other copyrights applied to them.

## LIFESTYLE KITCHENS

- Bosch Appliance Package in Stainless Steel includes 4 (Plan 1) or 5 (Plan 2 & 3) Burner Gas Cooktop, Oven, Microwave, Hood and Dishwasher
- White Thermofoil Shaker Cabinets Doors with Satin Nickel Knobs and Under Cabinet Lighting
- Della Terra Quartz Kitchen Countertops in White Sand-N with 6" Splash and Full Splash at Cooktop.
- Generous Island Per Plan
- Sterling Stainless Steel Single Basin Sink with Moen Genta Spot Resistant Stainless Steel Finish Faucet
- Cabinet Depth Refrigerator Space Pre-Plumbed for Ice Maker

## LUXURIOUS MAIN SUITES

- Main Bath (Bath #1) Features White 3x6 Subway Wall Tile and 2x2 shower pan tile with Frameless Clear glass enclosure in Polished Chrome
- Freestanding Signature Hardware Tub (Plan 2 & 3)
- Vanity includes Dual Under Mount Sinks with Cultured Marble Countertop and Moen Genta Polished Chrome Fixtures
- Private Western Pottery Elongated commode
- Spacious Walk-In Closets

## INTERIOR LIVING

- White Thermofoil Shaker Cabinets Doors with Satin Nickel Knobs
- Ceramic 12x12 Tile Flooring at Entry, Kitchen, Baths and Laundry with Designer Selected Carpet Throughout Living Areas
- Dual Panel Hollow Core Interior Doors with Andover Knobs in Satin Nickel
- Bullnose corners Throughout
- LED Recessed Lighting (Standard Locations Vary Per Plan)
- Structured Wiring with Enhanced CAT-6 Wire to Support Phone and High-Speed Internet
- Multi-Media Outlet to Support Phone/Data and Television at Great Room and selected locations. TV and Data Outlet Standard at All Bedrooms.
- Powder Room (Plan 3) Includes Gerber Blaze Pedestal Sink with Moen Genta Polished Chrome Faucet and Framed Mirror
- Conveniently located Interior Laundry

## ARCHITECTURAL AND ENVIRONMENTALLY EFFICIENT DETAILS

- Varied and Appealing Spanish Exteriors with Fire Resistant Concrete Tile Roofs
- Residence 1 Includes Private Gated Entry
- Attached 2-Car Garage Includes Insulated Metal Roll-up Garage Door with Opener and Two Transmitters

# ELEVATION *styles*



— AA – SANTA BARBARA —



— AB – SPANISH MONTEREY —



— AC – FORMAL SPANISH —